

MOVING IN OR OUT OF A MULTI-FAMILY COMMUNITY? REDUCING WASTE SAVES RESOURCES AND CAN SAVE YOU MONEY!

Moving can leave you with lots of clothes, furniture, and bulky items that you no longer use or have space for. **Instead of sending your items to the garbage and landfill, consider the following zero waste options!**



Sell: Post your items online (ex: Facebook Marketplace and Craigslist), have a yard sale, or sell them at a flea market or consignment store. Estate planning (to sell or give) may be another helpful option. Search “estate planning” online to find attorneys or financial planners that offer such services.



Call: Urban Ore picks up a wide spectrum of reusable goods for free and pays for vintage, antiques, and real wood furniture that’s in good condition. For more information, as well as others that may be able to come to you, visit [cvsan.org/Reuse](https://www.cvsan.org/Reuse).



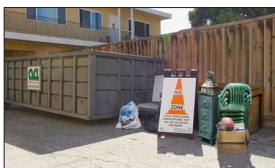
Give: List your items on the Castro Valley [freecycle.org](https://www.freecycle.org/town/CastroValley_CA) group ([freecycle.org/town/CastroValley_CA](https://www.freecycle.org/town/CastroValley_CA)), donate them to a thrift store, or ask around to see if anyone you know wants them or to find other places to donate to. Visit [cvsan.org/Reuse](https://www.cvsan.org/Reuse) for a local listing of places to donate your used items that are still in good condition.



Buy: If you are looking to purchase large items such as furniture, appliances, file cabinets, entertainment centers, rugs and carpets, please consider thrift shops and reuse depots. They may have just what you are looking for in slightly used, but inexpensive, condition. Visit [cvsan.org/Reuse](https://www.cvsan.org/Reuse) for more.



Local Reuse: For a listing and map of Castro Valley businesses that may be able to help, visit [cvsan.org/ReuseMaps](https://www.cvsan.org/ReuseMaps). CVSan’s Reuse Maps highlights businesses in the CVSan community that practice reuse by buying and selling used items, repairing items, or by providing other reuse services.



Bulky Pick-Up: Property Managers/Owners can call Alameda County Industries (ACI) at (510) 483-1400 to schedule a Bulky & Reuse Pick-Up for a multi-family community. Two cubic yards per unit per calendar year are allowed at no additional charge. For more, visit [cvsan.org/BulkyPickUp](https://www.cvsan.org/BulkyPickUp) and designate a Reuse Zone for tenants to use.



Textile Collection: During the first full week in June and October on regular collection day, place bagged textiles (household linens, clothing, etc.) curbside. Please visit [cvsan.org/Textiles](https://www.cvsan.org/Textiles) for a map and a full list of acceptable items.

For more details on any of the information listed above, visit [cvsan.org](https://www.cvsan.org) or call (510)-537-0757.

Information is provided by CVSan for informational purposes and is not sponsored or recommended by CVSan.

WHAT ELSE CAN WE DO?

If the reuse options above do not work for you, there are plenty of other reuse and recycling options. **Instead of sending your items provided to the garbage and landfill, consider the following:**



Boxes: Find boxes and donate ones that can still be reused on Buy Nothing, Craigslist and at shipping centers or stores. Durable reusable boxes are also available for rent at Boxbee, Rentacrate, U-Haul, and others.



Mattresses: drop off mattresses and box springs for free at the Davis Street Transfer Station in San Leandro. This program is a partnership between Waste Management of Alameda County and the Mattress Recycling Council. For more information, visit davisstreet.wm.com. Visit byebyemattress.com for additional local options to drop-off mattresses for recycling.



Food: For non-perishable food that can still be donated to those in need, moveforhunger.org can pick up or take those items and donate it to food assistance charities. For larger quantities: Dig Deep Farms, Faith Lutheran Church, and First Presbyterian Church offer pickup or drop-off to get food to those in need. Visit cvsan.org/FoodRecovery for more local options.



Need Backyard Service? If you have physical difficulty taking your carts to the curb and no one in your household is able to help, call ACI at (510) 483-1400 or visit AlamedaCountyIndustries.com for a curbside exemption form. Upon approval, ACI will access carts from your backyard or side yard. A doctor's letter or certificate from the Department of Motor Vehicles is required to qualify.



Drop-Off: CVSsan offers two collection events each year. In spring, sensitive documents for shredding and one additional item such as e-waste and reusable goods are collected. In summer, CVSsan often collects items such as electronics, batteries, fluorescent light bulbs, and latex paint. These events are open to CVSsan residents and businesses only. See below or visit cvsan.org/RecyclesDay for instructions to participate. For Alameda County Household Hazardous Waste facility information, visit stopwaste.org/HHW.

ITEMS ACCEPTED/DISTRIBUTED AT RECYCLES DAY EVENTS

CVSan Recycles Day Events	Textiles	Household Hazardous Waste	E-Waste	Tires or Mattresses	Documents for Shredding	Compost Give-Away
Spring	X		X	X	X	X
Summer	X	X	X			X

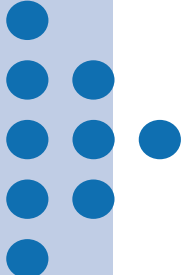
Note: Event months and accepted items, such as tires or mattresses, are subject to change. Visit cvsan.org/RecyclesDay for the most up-to-date information.



MULTI-FAMILY

recycling

WHAT GOES IN MY BLUE RECYCLING CART OR BIN?



Keep recyclables loose, don't bag them (except for bags and wrap).

Give containers a quick **rinse/wipe**.

SB 1383 law requires multi-family participation in recycling programs, education, and proper sorting. Visit cvsan.org/SB1383 for more.



All plastics #1-7 (except foam)



Bundled plastic bags/wrap



Scrap metal (up to 2 ft. & 40 lbs.)



Glass containers



Aluminum foil products & metal containers



Shelf stable (foil-lined) cartons



Clean paper



Cardboard

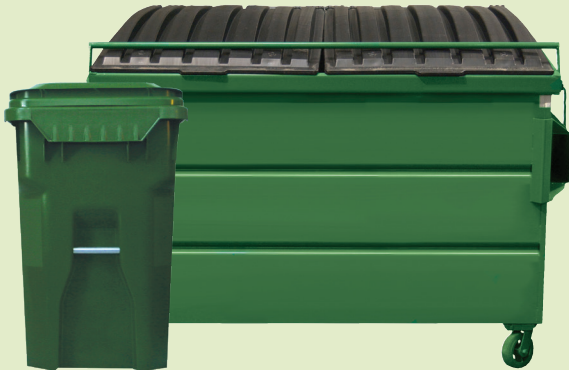
WHERE CAN I DISPOSE OF THESE KINDS OF WASTE?

12/2022



For pharmaceutical and sharps information, visit cvsan.org/Pharms. All other items shown at left are accepted at Alameda County Household Hazardous Waste Facilities or CVSan Recycles Day. For information, visit cvsan.org/HHW.

WHAT GOES IN MY GREEN ORGANICS CART OR BIN?



SB 1383 law requires multi-family participation in organics programs, education, and proper sorting. Visit cvsan.org/SB1383 for more.



Food scraps



Shredded paper in paper bags



Food-soiled cups & paper containers

HOW CAN I COLLECT FOOD SCRAPS?



Paper Bio-bag Carton Pail



Yard trimmings, uncoated wood & chips, cactus & palm



Paper towels, plates & napkins

WHAT GOES IN MY GRAY GARBAGE CART OR BIN?



Foam



Pouches, straws & utensils



Non-fluorescent light bulbs



Painted & stained wood



Vegetarian (rabbit, hamster, etc.) pet feces



Diapers & hygiene products